

More ways to give . . .

Please review our complete set of brochures on philanthropic gifting:

- *Bequests*
- *Charitable Trusts*
- *Gift Annuities*
- *Life Insurance*
- *Memorials*
- *Planned Giving*
- *Retirement Plans*
- *Stocks and Bonds*



Giving to CAPPED supports primary cancer prevention education and cancer support services for your family and friends in Otero County.

**Phone Today
(575) 434-HOPE (4673)**



**SERVING OTERO COUNTY
SINCE 2000**

**The CAPPED Building
907 New York Ave.
Alamogordo, New Mexico 88310
Phone: (575) 434-HOPE (4673)**

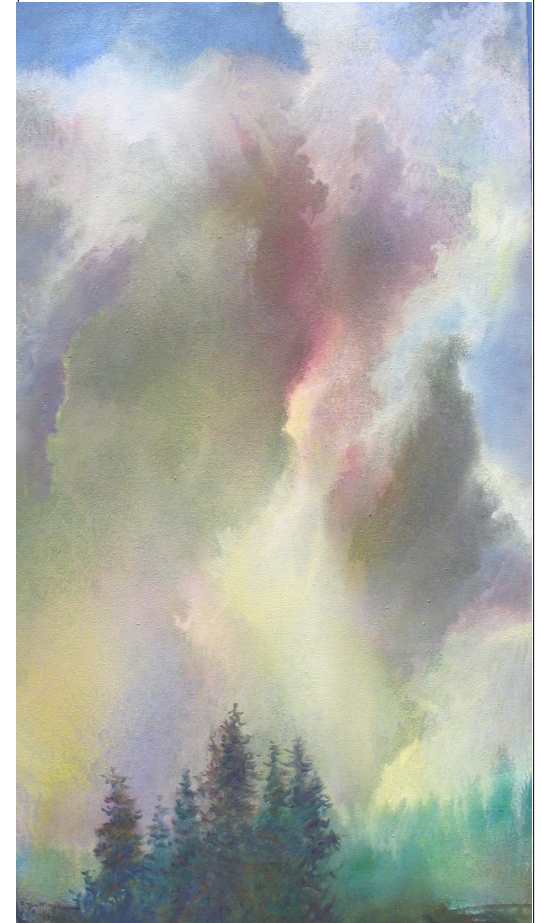
Artwork courtesy of artist Angus MacPherson

MoRo Gallery
806 Mountain Road NW
Albuquerque, NM 87102
PH: (505) 242-6272



Cancer Awareness, Prevalence, Prevention and Early Detection

BEQUESTS
REMEMBERING CAPPED
IN YOUR WILL



**The CAPPED Building
907 New York Ave.
Alamogordo, New Mexico 88310
Phone: (575) 434-HOPE (4673)**

**BEQUESTS . . . Remembering
CAPPED in your will.**



**You have succeeded.
Your contribution will
improve the health of
future generations.**

A will is the easy and effective means to ensure that you fully provide for your family and that your assets are distributed as you wish. Gifts by will, or bequests, both large and small are important to

CAPPED. Many friends have remembered CAPPED in their will while also providing for their family. A bequest through your will also provides continuing support of the ongoing work of the CAPPED organization. A gift to CAPPED through your will has several advantages:

- Charitable gifts made through your will are 100 percent deductible for estate tax purposes

- A charitable bequest may place your estate in a lower tax bracket
- Once you notify CAPPED of your bequest intention, you qualify for membership in the CAPPED Legacy Society.

Here are examples of how a “gift by will” to CAPPED might be worded. These examples can be adapted to suit your individual need. Please consult with your estate planner for additional guidance. You can call us at the CAPPED office at 434-HOPE (4673) for more information.

EXAMPLE: “I give, devise and bequeath to **CAPPED, Cancer Awareness, Prevalence, Prevention and Early Detection, Inc.**, Tax ID 85-0481409, for its general purposes all (or state fraction or percentage) of the rest, residue and remainder of my estate, both real and personal. CAPPED may be contacted at their office, 907 New York Avenue, Alamogordo, New Mexico, 88310. To the extent possible, gifts to charitable organizations shall be paid from income in respect of a decedent.”

Or

“I give, devise and bequeath to **CAPPED, Cancer Awareness, Prevalence, Prevention and Early Detection, Inc.**, Tax ID 85-0481409, the sum of \$_____ to be used for the general purposes of the organization. The organization may be contacted at their office at 907 New York Avenue, Alamogordo, New Mexico, 88310. To the extent possible, gifts to charitable organizations shall be paid from income in respect of a decedent.”

CALL: (505) 434-HOPE (4673)

Your gift supports primary prevention and support services for the people of Otero County.



I give, devise and bequeath to CAPPED . . .

	<p>The CAPPED Building 907 New York Ave. Alamogordo, New Mexico 88310 Phone: (575) 434-HOPE (4673)</p>
--	--